



Safeguarding Matters

JULY 15, 2016

VOLUME 1, NUMBER 1

Welcome to the first edition of our quarterly safeguarding newsletter, Safeguarding Matters. Those that have attended Safeguarding Forums will know that the Safeguarding Children Board (SCB) and Safeguarding Adult Partnership (SAP) aim to raise their visibility and better communicate and engage with staff about what they are doing and what impact this is having. Safeguarding Matters is part of this initiative.

This first edition focuses on our new Business Plans. At our Safeguarding Forum in February 2016 delegates were able to contribute to the identification of our key priorities and areas for development for improvement. I hope you will see that we listened to these views and have incorporated your views and opinions into our Plans.

We want this newsletter to be responsive to your information and communication needs in relation to safeguarding. If there are matters you want us to feature – or indeed if there is something you want to contribute – do not hesitate to let us know by contacting Gary McManus – gary.mcmanus@gov.im

Paul Burnett

Independent Chair of Safeguarding Children Board and Safeguarding Adult Protection

BUSINESS PLANS 2016/17

At our Forum in February 88% of delegates agreed we should keep the strategic priorities that we had established in consultation with you in 2015/16. Our strategic priorities for 2016/17 therefore remain as follows:

- PRIORITY 1 Ensure safeguarding is everyone's business.

- PRIORITY 2 Ensure we have robust safeguarding policies, procedures, protocols and practices which keep children safe.

- PRIORITY 3 Be assured that there are robust arrangements to address areas of safeguarding risk to children, young people and adults on the Isle of Man.

- PRIORITY 4 Ensure we have a workforce 'fit for purpose' in delivering effective safeguarding

- PRIORITY 5 Ensure the voices of service users and staff are heard in planning, delivering and evaluating safeguarding provision.

Things to look out for in the next few months

CSE Strategy and Toolkit

The Safeguarding Children Board approved the island's first Child Sexual Exploitation (CSE) Strategy and toolkit in May 2016. The Strategy entitled *'It couldn't happen here, could it?'* provides practitioners and managers a useful practice guide and aims to develop understanding and responses when they suspect a child or young person may be at risk of sexual exploitation.

'It couldn't happen here, could it?' provides background information on the issue of CSE, a practitioner's step by step guide including a CSE risk assessment tool, a high level action plan which tackles the key strategic themes (the '7 P's' – *Prevention, Protection, Pursuing and Prosecution, Partnership, Public Professional Confidence, Pathways, Performance monitoring*), and a Multi-Agency Planning and Improvement tool kit (The CSE – MAPIT) which will support future developments across each of the '7 P's' at both partnership and single agency level.

The documents are available on the Isle of Man SCB website.
www.iomscb.co.uk

New focus on Community Safeguarding Capacity and Resilience

As part of the continuous improvement of the safeguarding governance structures and processes, a significant development which supports the integration of the children's and adult's safeguarding agendas relates to the creation of the 'Community Safeguarding Capacity and Resilience Group (CSCRG). The group will have representatives from across all sectors including; public, private, third and Faith Communities that provide services to children, young people and adults. The main function of the group is to deliver the relevant aims and objectives and actions in the Business plans including, the community facing elements of the Communication and Engagement strategy, raising the profile of the SCB and SAP in the community at large, develop and implement community facing campaigns, engagement and communication in relation to safeguarding; and building safeguarding capacity and effectiveness across community based organisations to secure compliance with agreed standards and expectations. Further consideration will now be given to the role and function of a Community Safety Partnership which will focus on specific safeguarding themes / issues for example Domestic Abuse, Youth Offending, and CSE.

Domestic Abuse training

Domestic abuse training is being delivered across four sessions in June and July. 80 places were catered for and all four sessions were oversubscribed.

This training was designed to assist the implementation of the Domestic Abuse pathway and attendees have been invited to identify examples of good practice and also barriers to effective and consistent services and staff practice.

A reconfigured implementation group meeting is to be scheduled for the end of July 2016.

Launch of new Hoarding Panel

Hoarding panel and guidance are in development. The first meeting of the panel will be taking place on the 16th June. At this initial meeting we intend to agree future membership, aims and objectives and terms of reference for the group. It is hoped by taking a multidisciplinary approach to dealing with issues in which hoarding has become a problem that we can ensure an appropriate, consistent response from a variety of relevant organisations.

Combined Children Services Glossary of Terms

As part of the 'Towards a common language / understanding' strategy being developed for the Safeguarding Board, a glossary of key terms has been published on the Isle of Man SCB website. The document lists key terms and acronyms which are used currently across the children's services arena in an attempt to bring clarity on the many different terms which are used across agencies and professional groups. As you will know all too well, sometimes the same word means very different things to different people. Think of it as a 'jargon buster' which we will regularly update on the website. Should you want to contribute please contact Gary McManus.

Safeguarding Forum – September 2016

The next Safeguarding Forum will be held on the 23rd September 2016 at the Sefton Hotel. The Safeguarding Forum is part of our safeguarding governance structure. Its main purpose is to enable those working in services to engage in the work of the two Boards (Children's Safeguarding Board and Safeguarding Adults Partnership). The target audience for our Forums is managers and front-line staff from across all sectors that operate in the safeguarding arena – including Government departments, schools, the third sector and the private sector.

Invitations and information on workshops will be forwarded in due course.

-----End-----

Safeguarding Adults Partnership: Business Plan 2016 - 2017

Our Aim

Protecting the Vulnerable

Our Plan

Safeguarding is everyone's business

Safeguarding Policies, protocols, and practices in place across the partnership

Robust and Effective Arrangements in Place to Address areas of

A Workforce 'fit for purpose'

Voices of service users, staff, are heard in planning, delivering and evaluating services

Our Partners and Strategic Links

Voluntary and Third Sector Organisations

Department of Health and Social Care

Department of Education and Children

Department of Home Affairs

Isle of Man Constabulary

Department of Infrastructure

Children Services Partnership

Safer Communities Partnership

Priority Themes

Agenda for Change

Adults Services Re-balancing

Re-ablement

Mental Health

Neglect and Self Neglect

Residential Care, Nursing Homes and

Domestic Abuse

Drug and Alcohol Abuse

Growing elderly population

Mental Capacity and Deprivation of liberties

Financial Abuse

Transition across services

Learning Disability and autism

Empowerment

Prevention

Proportionality

Protection

Partnership

Accountability

Outcome

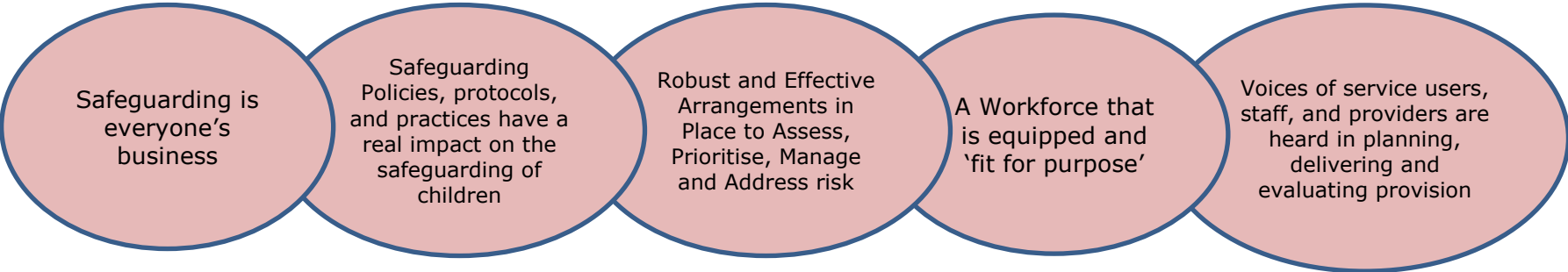
Adults are Safe

Safeguarding Children Board: Business Plan 2015 - 2016

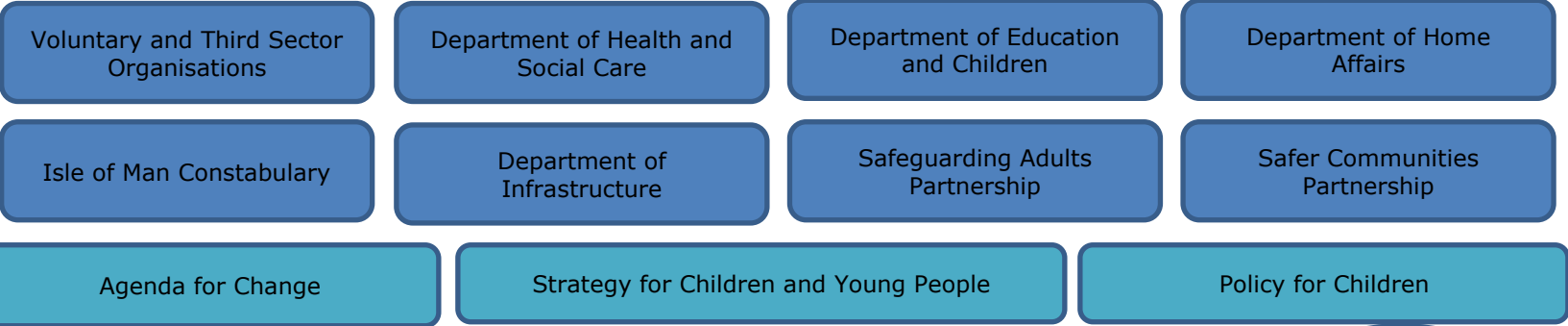
Our Aim

Protecting the Vulnerable: Children grow up free from harm and abuse

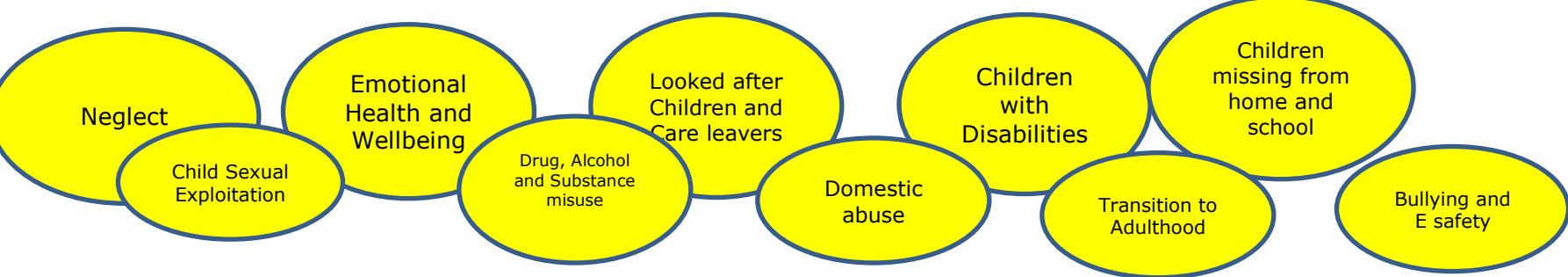
Our Plan



Our Partners and Strategic Links



Priority Themes



Outcome

'Every child will have the best possible opportunities in life'